

### Key Benefits

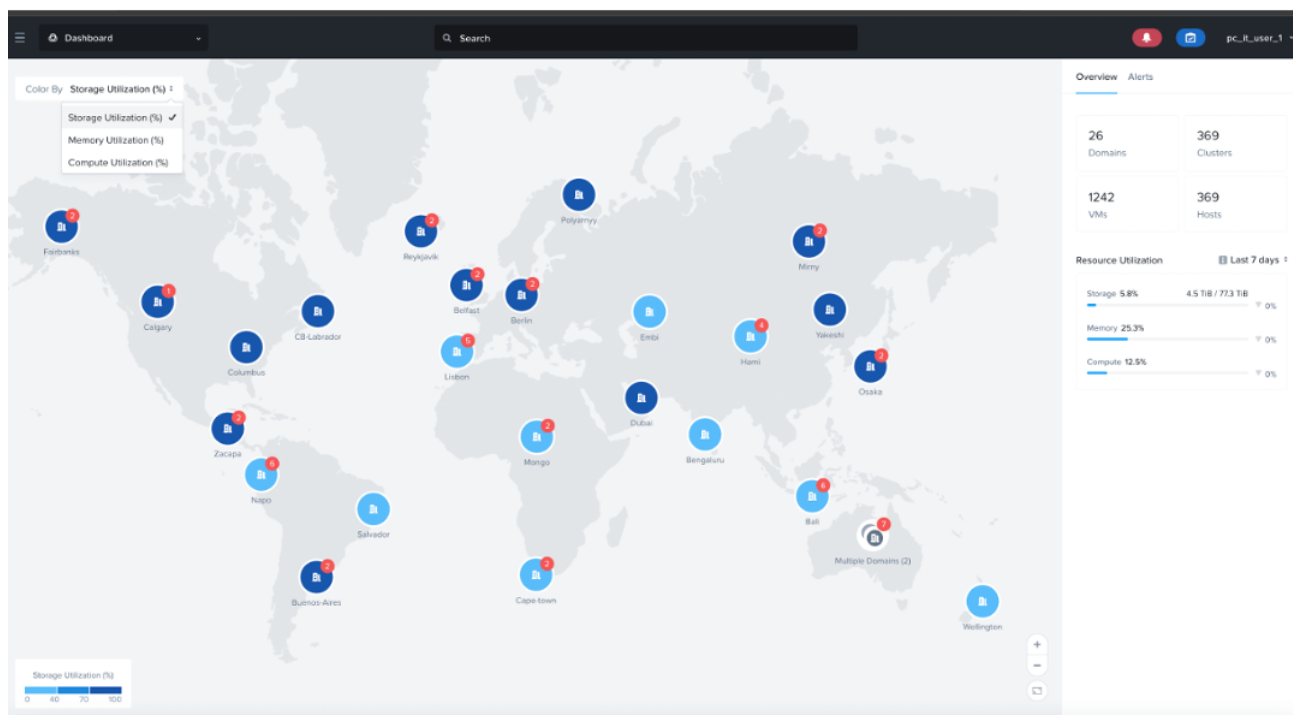
- Gain comprehensive insight into your hybrid multicloud infrastructure from a single, centralized dashboard.
- Boost operational efficiency with detailed domain and cluster metrics for streamlined management.
- Seamlessly monitor and maintain infrastructure health by viewing and resolving alerts across all the registered domains.
- Enhanced user experience with app-centric management to effortlessly traverse Nutanix services deployed across registered domains.
- Increase productivity by easily discovering and deploying Nutanix products and preferred partner apps.
- Improve efficiency with quick and accurate domain-specific search capabilities.

Ready to get Hands-On?

**Take a Test Drive**

Nutanix Central gives customers a cloud operating model to unify their experience and view and manage their Nutanix Cloud Platform (NCP) and Nutanix services deployed on-premises and in the public cloud via Nutanix Cloud Clusters (NC2).

Providing global visibility across the hybrid multicloud infrastructure, Nutanix Central delivers an enterprise cloud governance framework through federated IAM, projects, and license management. Users can discover, deploy and manage Nutanix services and preferred-partner solutions and seamlessly access and navigate across these services.



## Global visibility and management

Get a birds-eye view of your hybrid multicloud infrastructure across data centers and geographies from a single, easy-to-use dashboard. You can easily monitor and maintain the health of your infrastructure by seamlessly drilling down to view comprehensive domain and cluster metrics, including capacity utilization and alert summary statistics.

## App-centric management

Effortlessly traverse registered domains and Nutanix applications deployed in any domain through the unified console based on user access and entitlement (RBAC).

## Marketplace

Discover Nutanix portfolio products along with recommended preferred-partner applications and effortlessly deploy them with confidence and speed in the desired domain.

## Admin Center

Efficiently manage common administrative tasks across registered domains and Nutanix applications.

## Features/Capabilities

### Unified Control Plane

- Global visibility and management across data centers, cloud, edge, and SaaS.
- Single pane for multi-Prism Central (multidomain) management.
- Efficiently search and access infrastructure entities within registered domains.

### Enterprise Cloud Governance

- Support multidomain use cases like federated IAM, projects and categories, and global fleet management.
- Converge multiple customer-facing consoles and customer services like insights and license management in the same console.

### Seamless Multiproduct Experience

- Manage the lifecycle of all Nutanix cloud services through a single console.
- Seamlessly navigate across all services deployed across all domains.

## License

- Nutanix Central, is available to customers who have any [Nutanix Cloud Infrastructure](#) (NCI) tier license and [Nutanix Cloud Manager](#) (NCM) license.
- For customers on our [legacy portfolio](#), having an AOS license and a Prism Pro, Prism Ultimate or Calm license will entitle them to Nutanix Central. More details can be found on the [software options page](#).

Take Nutanix Central for a [free test drive](https://www.nutanix.com). Visit us at [www.nutanix.com](https://www.nutanix.com)



**T. 855.NUTANIX (855.688.2649) | F. 408.916.4039**  
**[info@nutanix.com](mailto:info@nutanix.com) | [www.nutanix.com](https://www.nutanix.com) | [@nutanix](https://twitter.com/nutanix)**

©2024 Nutanix, Inc. All rights reserved. Nutanix, the Nutanix logo and all product and service names mentioned herein are registered trademarks or trademarks of Nutanix, Inc. in the United States and other countries. All other brand names mentioned herein are for identification purposes only and may be the trademarks of their respective holder(s)