

Backup

Nutanix Mine on HPE ProLiant DX

Secondary storage simplified

AT A GLANCE

Nutanix Mine on HPE ProLiant DX with Veeam or HYCU is a comprehensive data protection and management solution that includes all the hardware and software components required to support any virtualized or legacy environment. It enables granular data recovery for mission critical applications and a path to longer-term data retention solutions with Nutanix Objects, tape media and much more.

“We have seen a significant time savings for backup management, together with excellent performance and scalability. The ROI with HYCU was timely and definitely very positive.”

– Simone Ferrigno, Nencini Sport

CUSTOMER CHALLENGES

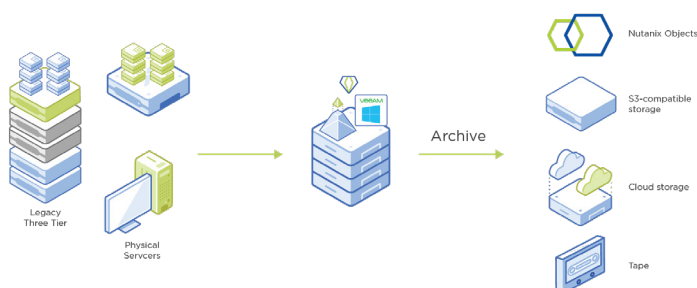
Companies are modernizing their datacenters with hyperconverged infrastructure (HCI) for greater simplicity, performance, and scalability. However, though their infrastructure evolves, often their backup and data protection strategies don't, and they're left dealing with legacy backup solutions that aren't meant to meet modern requirements. Lack of control over data and backup leads to long and complex recovery, lost data, application unavailability, and missed service level agreements (SLAs). Nutanix Mine on HPE ProLiant DX brings the simplicity and scale of HCI and Veeam or HYCU to address customer's backup, long-term retention, and archiving needs.

SOLUTION OVERVIEW

Nutanix Mine on HPE ProLiant DX blends innovative technology from backup software leaders Veeam and HYCU allowing you to experience top-notch cloud data management on an industry-leading enterprise cloud platform. The result is a full-stack solution enabling you to quickly go from project planning to a complete data management solution, without the cost and overhead of standalone systems.

COMPLETE DATA PROTECTION AND MANAGEMENT

Nutanix Mine on HPE ProLiant DX with Veeam or HYCU is a dedicated secondary storage solution designed to protect both your Nutanix and your legacy IT environment. It offers the advanced functionality and support of Veeam or HYCU backup software and can stage to longer term archival locations, such as Nutanix Objects, or S3-compatible storage.



CUSTOMER BENEFITS

The benefits of the solution are:

- **Faster time-to-value**—Simplified customer experience for sizing, ordering, deploying, managing and scaling.
- **Unified IT operations**—Integrated operations from deployment to day-to-day data management.
- **Drop in, scale out**—Non-disruptively expand your existing data protection environment to scale with the business.
- **Single simplified solution**—Created and supported by two marketing leaders to remove complexity and ensure data availability.

RESOURCES AND GETTING STARTED

Learn more about Nutanix Mine at:

<https://www.nutanix.com/products/mine>

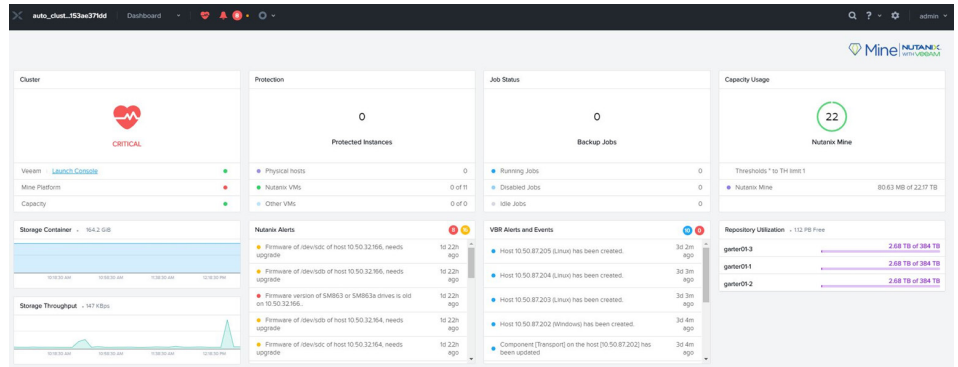
<https://www.nutanix.com/hpe>

“Our testing of Nutanix Mine with Veeam shows significant performance improvements over our current environment. Proven scalability, and the flexibility to grow with our increasing business needs, is critical for us. This ensures we have the right backup and disaster recovery infrastructure in place protecting our data on a consistent and reliable basis.”

– Sean Gilliam, Ameritas

SIMPLIFIED MANAGEMENT

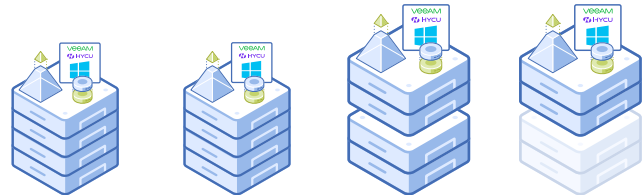
Through tight Veeam or HYCU integration with Nutanix HCI data fabric and the advanced Prism management console, IT managers can now get a unified view to monitor and manage their HCI infrastructure and data protection environment.



SIMPLIFIED CONFIGURATIONS

Nutanix removes guesswork when it comes to sizing and configurations. The solution is offered in two “right-sized” form factors optimized for performance. You can start off with the small system that is specifically designed to support up to 250 VMs, or the medium option that supports up to 500 VMs. At any time, if you want to scale beyond the small or medium systems, you can do so by seamlessly inserting add-on systems for a maximum of eight nodes. In this way, you can non-disruptively scale your data protection solution to meet your growing business needs.

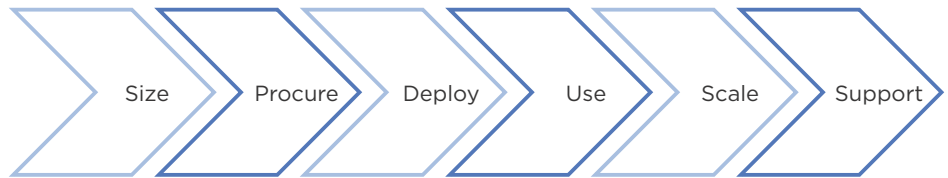
Nutanix Mine with HPE ProLiant DX Configurations



| | Extra Small HPE ProLiant DX2200 + DX170r | Small HPE ProLiant DX2200 + DX170r | Medium 2x HPE ProLiant DX2200 + 2x DX190r | Expansion Nodes ProLiant DX2200 + 2x DX190r |
|--------------------------------|--|--|---|--|
| Rack Size | 2U | 2U | 4U (2U x 2) | 2U |
| SSD (per node) | 1x 1.92 TB | 1x 1.92 TB | 2x 1.92 TB | 2x 1.92 TB |
| HDD (per node) | 2x 6 TB | 2x 12 TB | 4x 12 TB | 4x 12 TB |
| Usable Capacity (total) | 30-50 TB | 70-100 TB | 140-200 TB | 70-100 TB |
| Veeam or HYCU licenses | 0 only | 0 or 250 | 0 or 250 | 0 or 250 |

SIMPLIFIED CUSTOMER EXPERIENCE

Nutanix and Veeam or HYCU have radically simplified the end-to-end customer experience by streamlining all the steps—from sizing to providing joint customer support—to accelerate time-to-value for you and your company.



- Size:** Veeam and HYCU sizing has been integrated into the Nutanix Sizer tool. By selecting the “add secondary storage” checkbox, an appropriately sized Mine solution can be added to a primary environment sizing. The backup software configuration will be optimized to the appliance hardware.
- Procure:** Nutanix Mine on HPE ProLiant DX with Veeam or HYCU is sold as a single SKU. No complicated bill of materials or manual assembly of piece parts is involved. Just answer three simple questions: number of VMs to back up, network connection, and required maintenance level, and we’ll configure a secondary storage solution that is right for your business needs.
- Deploy:** Once you receive the pre-packaged solution, simply rack & stack the appliance and run an automated installation program (Foundation) to install both Nutanix and the Veeam or HYCU software. Go from “power on” to configuring backup jobs in a matter of hours—not days or weeks.
- Use:** Nutanix Mine is tightly integrated with Nutanix HCI data fabric and advanced Prism management console. That means, for the first time, customers can rely on a single pane of glass to monitor their primary storage as part of the HCI infrastructure, as well their secondary storage for data backup.
- Scale:** When your backup environment grows and needs to be extended, Nutanix Mine on HPE ProLiant DX with Veeam or HYCU offers a seamless scale-out process. We provide a scale-out option to easily add expansion nodes to support more VMs non-disruptively into your existing Nutanix Mine with Veeam or HYCU deployment.
- Support:** Nutanix and Veeam or HYCU have worked together to establish a cooperative support program in order to jointly handle support cases and escalate cases in a timely manner. Feel free to call either Nutanix or Veeam or HYCU when you have an issue; we’ll handle the rest!

SECONDARY STORAGE SIMPLIFIED FOR THE MODERN DATACENTER

Nutanix Mine on HPE ProLiant DX with Veeam or HYCU offers makes integrated data protection and cloud data management easy, providing performance, web-scalability, and intuitive backup simplicity. Discover a turnkey solution that delivers fast time-to-value, unified IT operations, and the ability to easily drop-in and scale up/scale out to meet the needs of today’s modern data center.



T. 855.NUTANIX (855.688.2649) | F. 408.916.4039
info@nutanix.com | www.nutanix.com | [@nutanix](https://twitter.com/nutanix)