



## SOLUTIONS BRIEF

# MAXIMIZE YOUR NUTANIX ROI WITH SURELINE SUREedge®

**SUREedge delivers compelling value to  
Nutanix users with Migration and DR solutions**

## AT A GLANCE

Nutanix delivers an enterprise cloud platform that natively converges compute, virtualization and storage into a resilient, software-defined hyperconverged infrastructure (HCI) solution with rich machine intelligence. The world's most advanced enterprise data centers rely on Nutanix technology to power their mission-critical workloads at any scale. Sureline minimizes time to production and maximizes return on investment (ROI) for Nutanix users by providing compelling value through enhanced and certified solutions for:

- Efficient, secure and reliable migration of production applications to Nutanix HCI from any physical or virtual system
- WAN-optimized Disaster Recovery (DR) from/to Nutanix, supporting any cloud with customized RPO (Recovery Point Objective) and RTO (Recovery Time Objective)

## SOLUTION BENEFITS

- Trusted and proven migration and DR solutions under the Nutanix Ready certification program
- Engineered transformation processes reduce migration time, allowing fast production use of Nutanix HCI without data loss
- Option to quickly seed large amounts of data (100+ TBs) to initiate DR via secure, transportable hardware appliance



*Sureline customer  
WDI Device reports,  
"I was impressed with  
the Sureline Systems  
team. My servers are  
healthy ... I spend less  
time managing them  
and more time  
providing service."*

**- Shane Archibald**  
IT Administrator,  
WDI Device

## APPLICATION MIGRATION PROCESS

Once a data center manager racks the Nutanix HCI appliance, the next step is to determine how to move applications from the legacy systems to the new Nutanix system. Migrating to Nutanix HCI requires the following steps for a timely, efficient, and secure on-premises (on-prem) migration:

1. Building migration plans
2. Capturing data and system image(s)
3. Replication to Nutanix target platform
4. Transformation to Nutanix HCI format (engineered processes target Nutanix Acropolis (AHV), VMware vSphere, OpenStack, and Microsoft Hyper-V)
5. Test
6. Final incremental update
7. Cut-over to target site - final transformation to the Nutanix HCI

Sureline SUREedge Migrator provides an end-to-end solution to plan, automate and execute these steps to a successful completion with confidence. SUREedge Migrator ensures a secure, efficient and reliable migration to Nutanix while requiring little operational expenditures (OpEx) for a higher ROI.

## SUREedge ARCHITECTURE

SUREedge Migrator is designed to provide the quickest time to production and the least operational disruption for migrations to Nutanix HCI. SUREedge architecture includes the following standard product features and engineered solutions targeting Nutanix supported hypervisors:

- Agentless architecture for ease of installation
- LAN and WAN throttling algorithms
- Automated transformations with data integrity verification
- Supporting any cloud, hypervisor and hardware as the source with customized support for Nutanix AHV, VMware vSphere, Microsoft Hyper-V, and OpenStack
- Snapshot-based, file system-based block-level hybrid capture process
- Fully automated process for moving 100s or 1000s of applications with full confidence

For Nutanix DR. SUREedge architecture includes key security and data movement features to ensure a fast and safe DR process. These features include:

- Advanced point-to-point security with military grade encryption during data transit and at rest
- Ultra-bandwidth friendly with globally deduplicated and compressed data replication

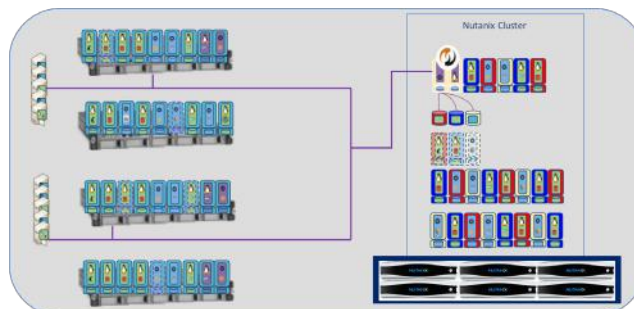
## MIGRATING TO NUTANIX WITH SUREedge MIGRATOR

Enterprises typically have heterogeneous environments running applications on physical systems and on virtual machines (VMs) with different hypervisors. For users who deploy Nutanix HCI, Sureline SUREedge Migrator simplifies and accelerates the process of migrating to Nutanix. Combined with Nutanix's simple install process, SUREedge allows users to increase their ROI by migrating rapidly and smoothly from any physical, virtual or Cloud infrastructure to Nutanix HCI. Users have the choice of selecting the Nutanix native AHV, VMware vSphere, OpenStack, or Microsoft Hyper-V hypervisor.

## HOW MIGRATION TO NUTANIX WORKS

SUREedge Migrator is installed on a Nutanix NX node as a NDFS compliant VM. Users then list the systems, physical and/or VMs, to be migrated, followed by plans to move the systems in batches. All this is through a user friendly SUREedge Migrator GUI. Once everything is listed, users then execute the plans.

SUREedge Migrator allows users to capture any system image and transport to any hypervisor on Nutanix. Additionally, users can set different IP addresses, vCPU, and memory during the migration process. Furthermore, SUREedge Migrator can incrementally capture and update, allowing users to migrate, test, apply final incremental update, and cut over with minimal downtime.



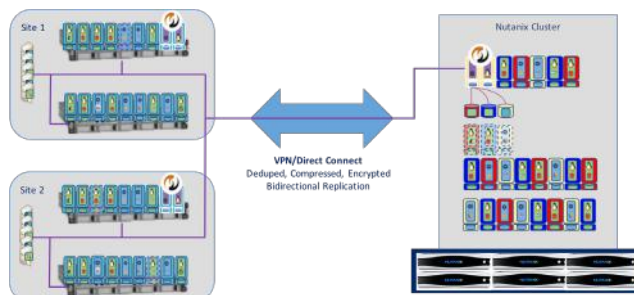
- SUREedge instance installed on NX platform
- Agentless capture from physical or virtual systems
- Transform to VMware / OpenStack / Hyper-V / Acropolis VM format
- Recover/migrate to ANY Nutanix in cluster

## NUTANIX DR WITH SUREedge DR AND SUREedge SUNSHINE

SUREedge DR is a Nutanix Ready certified solution for DR from/to Nutanix. SUREedge DR delivers WAN-optimized active-active replication with global deduplication, compression and encryption for business continuity. SUREedge Sunshine is available to migrate large amounts of data via a secure transportable hardware appliance for initial data seeding followed by incremental updates over the WAN.

There are four scenarios for DR in a Nutanix-powered data center:

- Non-Nutanix to Nutanix
- Nutanix to Cloud
- Cloud to Nutanix
- Nutanix to Nutanix



- SUREedge VM appliance on-prem
- Agentless application aware data capture from VM/Phy
- Dedupe local copy with local recovery option

- SUREedge VM on NX
- Dedupe storage during normal ops
- Create bootable VM image as needed
- Recover to test/recovery network as needed

## 1. Non-Nutanix to Nutanix:

Environments that have non-Nutanix infrastructure require the additional capabilities provided by SUREedge for recovery to a Nutanix-powered DR site:

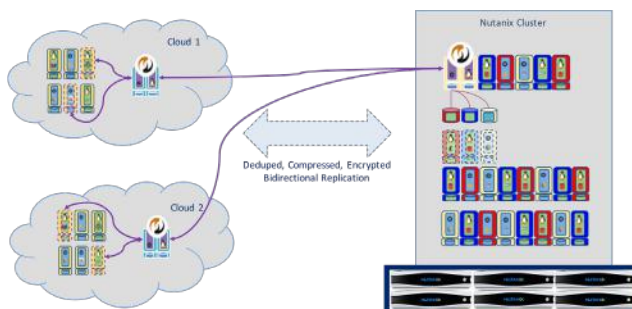
- Capture workloads running on non-Nutanix environment
- Bandwidth-optimized replication to DR site (globally deduplicated and compressed replication)
- Transform - convert to the appropriate VM format at the DR site
- Apply regular incremental updates
- Orchestrate recovery process at the Nutanix-powered DR site

## 2. Nutanix to Cloud:

In this scenario, SUREedge running on Nutanix located on-prem captures all workloads. It globally deduplicates and replicates the workloads to the Cloud where another SUREedge instance running on the Cloud manages the recovery process. It is important to note that during the recovery process, SUREedge not only orchestrates the recovery but also transforms the workload images to the target Cloud format. For example, if a user has workloads on Nutanix AHV on-prem, and the Cloud of choice for DR is based on VMware, SUREedge automatically transforms the VM images to VMware as they are recovered in the Cloud.

## 3. Cloud to Nutanix:

Users are increasingly concerned about DR of their workloads running in the public Cloud. Nutanix and SUREedge DR provide a comprehensive solution where Nutanix HCI is used as a target for DR. In this scenario, SUREedge running on the Cloud captures all the workloads and globally dedupes, compresses, encrypts, and replicates it to another SUREedge instance running on the Nutanix cluster. SUREedge running on the Nutanix cluster manages the recovery process. During the recovery process, SUREedge not only orchestrates the recovery but also transforms the workload images to the hypervisor format that is running in the Nutanix cluster, regardless of the format at the Cloud. For example, if a customer has workloads in Amazon Web Services (AWS) as AMIs, and the DR site is running Nutanix AHV, SUREedge would transform the AMI images to AHV as they are recovered in the Nutanix cluster.



- SUREedge VM instance on cloud
- Agentless application-aware data capture
- SUREedge-Cloud to SUREedge-NX replication

- SUREedge VM appliance on NX
- Dedupe storage during normal ops
- Create bootable VM images as needed
- Recover to test/recovery network as needed

## 4. Nutanix to Nutanix:

In this scenario, use Nutanix replication and DR when both sides have Nutanix HCI.

## CONCLUSION

Once an enterprise decides to deploy Nutanix HCI in their data center, Sureline plays a critical role in the successful deployment to production, increasing the ROI of the Nutanix platform. Sureline SUREedge Migrator provides a certified solution for efficient, secure and reliable migration of all applications from the legacy system to the Nutanix HCI. After Nutanix HCI is in production, SUREedge DR ensures business continuity for applications on any Cloud or

hypervisor infrastructure. For initially seeding the DR site with large amounts of data (100+ TB), SUREedge Sunshine offers an efficient and secure solution. With engineered transformation processes for Nutanix AHV and other supported hypervisors, SUREedge software platform is a unique solution that provides the reliability and speed for accelerating the ROI of a Nutanix-powered data center.

### ABOUT SURELINE SYSTEMS

Sureline Systems enables business agility, productivity, and with cloud migration and disaster recovery of any virtual, physical, or containerized application or server at the push of a button. Sureline's patented, award winning SUREedge® enterprise-class software solutions deliver application mobility that is secure, reliable and efficient and is key to enabling transitions to the cloud, new infrastructures and a myriad of other transformative architectures. Sureline partners with industry leaders including Alibaba Cloud, Google Cloud Platform, Oracle, Nutanix, and AWS. Sureline is headquartered in San Jose, CA, and its products and services are available through a global network of VARs and technology service providers.

Red Herring Top 100; Red Herring Global 100, CIO Review Top 100 | Twitter: [@SurelineSystems](#) | LinkedIn: <https://www.linkedin.com/company/sureline-systems>

### FOR MORE INFORMATION

Visit [www.surelinesystems.com](http://www.surelinesystems.com) or send an email to [sales@surelinesystems.com](mailto:sales@surelinesystems.com)

### TERMS & CONDITIONS

This datasheet is for informational purposes only. Sureline makes no warranties, express or implied, in the contents of this datasheet.