



COMMScope®

RUCKUS®

Solution Overview

Virtual SmartZone on Nutanix AHV

Table of Contents

RUCKUS SMARTZONE + NUTANIX	3
vSZ on Hyper Converged Infrastructure (HCI)	3
RUCKUS SMARTZONE NETWORK CONTROLLERS	4
Access Point and ICX Switch Management	4
About Nutanix	6

Ruckus SmartZone + Nutanix

vSZ on Hyper Converged Infrastructure (HCI)

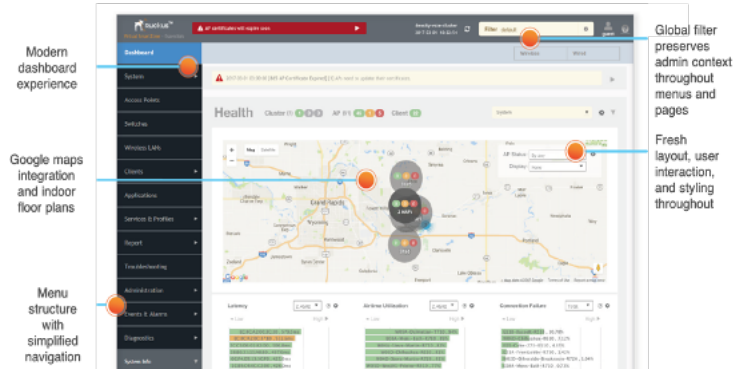


FIGURE 1: RUCKUS VIRTUAL SMARTZONE 5.1.1 IS VALIDATED ON NUTANIX AHV (AOS 5.10.1)

Networks that ‘just work’ from Ruckus now run on ‘infrastructure and cloud services that just work’ from Nutanix

Nutanix is the leader in hyperconverged infrastructure (HCI) solutions. Traditional datacenter infrastructure can't keep up with the speed of business today. Managing separate silos for compute, storage, virtualization, and networking is too slow and requires too much IT specialization. There's a better way: Nutanix Enterprise Cloud is a modern, software-defined solution that natively integrates all IT resources to run any application, including Ruckus Virtual SmartZone Controllers, while delivering true consumer-grade simplicity that makes infrastructure management effortless.

Hyperconverged infrastructure streamlines the deployment, management and scaling of datacenter resources by combining x86-based server and storage resources with intelligent software in a turnkey software-defined solution. Separate servers, storage networks and storage arrays can be replaced with a single hyperconverged infrastructure solution to create an agile datacenter that easily scales with your business.

Now IT organizations that rely on Nutanix Acropolis can install Ruckus Virtual SmartZone controllers directly on AHV, the Acropolis virtualization layer. Virtualization no longer needs to be a distinct layer of the IT stack that has to be licensed, deployed, and managed separately.

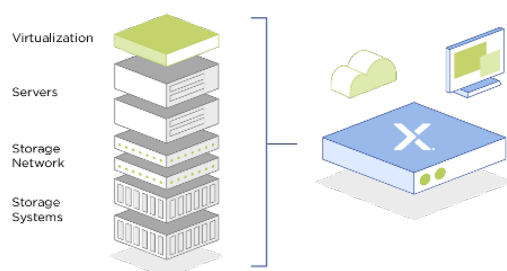


FIGURE 2

Nutanix AHV is native, enterprise-grade virtualization included with the Enterprise Cloud OS.

Ruckus SmartZone Network Controllers

Access Point and ICX Switch Management

Ruckus SmartZone network controllers simplify the complexity of scaling and managing wired switches and wireless access points through a common interface to support private-cloud network-as-a-service (NaaS) offerings in addition to general enterprise networks. All physical and virtual SmartZone appliances support network configuration, monitoring, provisioning, discovery, planning, troubleshooting, performance management, security and reporting. SmartZone's single, user-friendly web interface handles network visibility from the wireless edge to the network core and enabled IT administrators to perform day to day management tasks, troubleshoot user connectivity problems and define and monitor user and application policies without requiring advanced network skills and CLI expertise.

For a detailed description of all capabilities, please see:

<https://webresources.ruckuswireless.com/pdf/datasheets/ds-smartzone-family.pdf>

The screenshot displays the Ruckus SmartZone Unified Network Management interface. On the left, a sidebar contains navigation menus for General Settings, Switch Settings, AP Settings, Cluster, Maps, Certificates, Templates, Access Points, Switches (highlighted), Wireless LANs, Clients, Applications, Services & Profiles, Report, and Troubleshooting. The main area shows a table of switches with columns for Switch Name, Switch Group, MAC Address, Serial Number, Model, IP Address, Status, Registration State, Ports, Port Status, Uptime, and Alerts. The table lists various switches including AN133, N101 Stack, Switd-2-NCT-122, CEP-120-S2W, Switd-1-NCT-121, N/A, SNA7HA-STK, ACC-SNA7HA-170, N/A, CEP-122-SNA7HA, S132, ACC-S1A-171, S1A-STK, TANTO-STK, N/A, ACC-TAN-142, and CEP-117. Each switch entry includes its group, MAC address, serial number, model, IP address, status (Online or Offline), registration state, number of ports, port status (Online, Offline, or Unknown), uptime, and the number of alerts.

Switch Name	Switch Group	MAC Address	Serial Number	Model	IP Address	Status	Registration State	Ports	Port Status	Uptime	Alerts
AN133	Rack_A31	60:9C:9F:5B:0B:34	BYC2243A008	IC17150	10.176.136.13	Online	Approved	162	19 0 134	18:05:01.00	2
N101 Stack	Rack_A35	60:9C:9F:5C:02:14	BT02143A004	IC17150	10.176.144.52	Online	Approved	334	37 0 291	2 days, 17:21:03.00	0
Switd-2-NCT-122	Rack_A29	74:8E:F8:F6:79:00	CRH2235A004	IC17750-4B02F	10.176.141.14	Online	Approved	80	49 0 7	1 day, 7:59:39.00	3
CEP-120-S2W	Rack_A29	00:00:00:00:01:20	CRH33191D1J	IC17750	10.176.141.138	Online	Approved	80	5 0 55	1 day, 19:42:37.00	3
Switd-1	Rack_A35	CC:4E:24:00:50:00	CRH33191D1J	IC17750	10.176.144.65	Online	Approved	152	16 0 136	2 days, 17:20:49.00	1
CCEP-114-20Q	Rack_A29	60:9C:9F:20:16:00	CRH33481D1C	IC17750	10.176.141.15	Online	Approved	180	13 0 167	1 day, 20:06:38.00	2
Switd-1-NCT-121	Rack_A29	CC:4E:24:03:7C:80	CRH33501D1L	IC17750-4B02F	10.176.141.13	Online	Approved	63	11 0 5	1 day, 2:25:28.00	2
N/A	Rack_A31	CC:4E:24:01:F6:80	CRH33501D1Y	IC17750	10.176.136.15	Offline	Approved	0	29 0 113	N/A	19
N/A	Rack_A29	60:9C:9F:1E:06:00	CRJ33411004	IC17750	10.176.141.18	Offline	Approved	0	16 0 104	N/A	1
N/A	Rack_A40	CC:4E:24:3B:3A:80	CRH2235A005	N/A	N/A	Offline	Approved	0	0 0 0	N/A	1
SNA7HA-STK	Rack_A35	60:9C:9F:5B:9C:50	CY8324A00H	IC17450	10.176.144.89	Online	Approved	488	48 0 410	9:10:44.00	14
ACC-SNA7HA-170	Rack_A30	00:00:00:00:01:70	CY8324700Y	IC17450	10.176.137.154	Online	Approved	206	28 0 164	14:29:31.00	3
N/A	Rack_A31	00:00:00:00:01:10	CY833471070	N/A	N/A	Offline	Approved	0	32 0 287	N/A	1
N/A	Rack_A29	00:00:00:00:01:23	CY8334900P	N/A	10.176.141.20	Offline	Approved	0	11 0 113	N/A	3
CCEP-122-SNA7HA	Rack_A29	CC:4E:24:09:03:08	CY133330017	IC17450	10.176.141.32	Online	Approved	138	19 0 119	1 day, 20:05:07.00	3
S132	Rack_A31	CC:4E:24:04:8B:44	DUH2145000E	IC17250	10.176.136.12	Online	Approved	176	19 0 156	1 day, 20:43:08.00	1
ACC-S1A-171	Rack_A30	CC:4E:24:04:8B:50	DUH2145000H	IC17250	10.176.137.155	Online	Approved	130	27 0 66	1 day, 17:51:46.00	3
S1A-STK	Rack_A36	CC:4E:24:04:31:F8	DUQ2145000K	IC17250	10.176.144.147	Online	Approved	528	44 0 465	2 days, 17:09:30.00	1
TANTO-STK	Rack_A36	60:9C:9F:52:5B:6C	E2C322A00L	IC17650	10.176.144.156	Online	Approved	156	16 0 139	17:29:23.00	6
N/A	Rack_A31	60:9C:9F:52:51:02	E2D322A005	IC17650	10.176.136.14	Offline	Approved	0	26 0 117	N/A	1
ACC-TAN-142	Rack_A30	00:01:00:01:F1:62	E2D322A00E	IC17650	10.176.137.153	Online	Approved	164	22 0 138	1 day, 17:57:56.00	3
CEP-117	Rack_A29	60:9C:9F:FC:5B:44	FEC3233018	IC17150	10.176.141.17	Online	Approved	136	20 0 105	1 day, 4:30:10.00	2

FIGURE 3: SMARTZONE UNIFIED NETWORK MANAGEMENT

About Nutanix

Nutanix makes infrastructure invisible, elevating IT to focus on the applications and services that power their business. The Nutanix enterprise cloud platform leverages web-scale engineering and consumer-grade design to natively converge compute, virtualization and storage into a resilient, software-defined solution with rich machine intelligence. The result is predictable performance, cloud-like infrastructure consumption, robust security, and seamless application mobility for a broad range of enterprise applications. Learn more at www.nutanix.com or follow on twitter @nutanix

Ruckus solutions are part of CommScope's comprehensive portfolio for Enterprise environments (indoor and outdoor).

We encourage you to visit commscope.com to learn more about:

- Ruckus Wi-Fi Access Points
- Ruckus ICX switches
- SYSTIMAX and NETCONNECT: Structured cabling solutions (copper and fiber)
- imVision: Automated Infrastructure Management
- Era and OneCell in-building cellular solutions
- Our extensive experience about supporting PoE and IoT

COMMScope®

RUCKUS®

commscope.com

Visit our website or contact your local CommScope representative for more information.

Unless otherwise noted, all trademarks identified by ® or ™ are registered trademarks, respectively, of CommScope, Inc. This document is for planning purposes only and is not intended to modify or supplement any specifications or warranties relating to CommScope products or services. CommScope is committed to the highest standards of business integrity and environmental sustainability with a number of CommScope's facilities across the globe certified in accordance with international standards, including ISO9001, TL9000, ISO14001 and ISO45001. Further information regarding CommScope's commitment can be found at www.commscope.com/About-Us/Corporate-Responsibility-and-Sustainability.

© 2019 CommScope, Inc. All rights reserved.

