

Maximize End-User Experience for Digital Workspaces with Nutanix and Login VSI



Login VSI is widely recognized as the industry standard in VDI performance testing. The load testing, compatibility testing and continuous testing solutions by Login VSI are all based on our industry-standard and patented virtual user technology delivered in their Login Enterprise product. The Login Enterprise virtual user technology consists of a proven methodology, industry-standard user workloads, and responsiveness metrics. Login Enterprise is used by both vendors and enterprises to build and manage centralized desktop environments with superior performance and availability. Login Enterprise provides business value in many customer use cases including change management, application performance, platform availability, capacity planning, and SLA verification.

By scaling thousands of virtual users, Login Enterprise application benchmarking software can be used to predict the maximum user density before deploying to production and objectively optimize without impacting your production users. You can deliver more users with a better digital workspace performance and at a lower cost.

“Our job, as leaders in IT, is to have our finger on the pulse of changing technology and capture innovation to transform our organization’s ability to provide and improve services. This allows our business to pivot in coordination with strategy while not worrying about the underlying equipment and software. When we make the right decisions, we enable all of our healthcare providers and revenue-generating activities to be more productive for patients and sustain a healthy financial operating model.”

– Jeremy Bernstein, Interim CTO,
Presence Health

Enterprises must ensure that their applications and workspaces continue to function properly if any changes are made within their Nutanix Enterprise Cloud Platform.

Further, Login Enterprise automatically tests the compatibility of applications with updates to their desktop images. It delivers plain and simple reports that allow application and workspace owners to make quick decisions on whether to move forward with a change or to dive deeper into a specific application to see what the potential issues might be.

SOLVING A CUSTOMER PROBLEM

In late-2017, Presence Health initiated an Epic Systems upgrade project that precipitated a multi-million-dollar investment in Nutanix Enterprise Cloud OS software, hardware, software, and implementation services. Login VSI was brought into the project by Citrix to help with performance optimization. The Login VSI test-data enabled the Nutanix engineer on-site to optimize specific settings in the Nutanix software and hardware used for the solution.

The first load testing run after implementation of the new system supported a maximum of 2912 users. By optimizing based on the test data, the customer could increase to a maximum of 4200 users, on the same set of hardware. This suggests a total annual value of over \$2.9M, using Gartner's number of \$2,300 for the Total Cost of Ownership per Server Based Compute device.

SOLUTION ARCHITECTURE

Using Login Enterprise, the Virtual Appliance is tasked with scheduling sessions and collecting data while the Launchers are tasked with initiating sessions to the target VDI or RDSH environment. The Login Enterprise synthetic users run inside of the target environment and can run any application within the digital workspace to generate load or monitor the production environment for availability and responsiveness. This entire framework can be quickly and easily deployed using the Nutanix Calm blueprints for Login Enterprise.

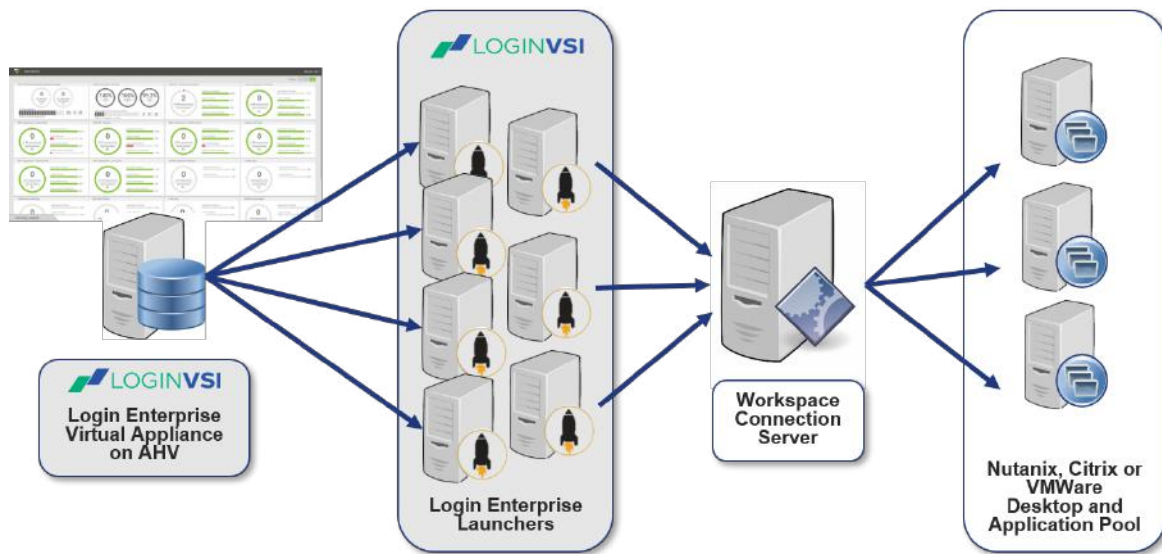


Figure 1 - Login Enterprise Infrastructure

KEY SOLUTION BENEFITS

Nutanix and Login VSI help deliver end-to-end solutions for the best user performance.

Here are the top 5 benefits of using Login VSI and Nutanix Enterprise Cloud together:

- Build an optimized Nutanix environment that offers excellent performance while maximizing value through reducing costs by buying only what you need
- Reduce costly errors and time spent re-architecting by making relevant infrastructure decisions based on facts vs. speculation
- Enhance productivity with pre- and post-testing to limit production disturbances from planned changes
- Reduce risk to your business through pro-active monitoring to avoid production disturbances from unplanned changes
- Plan better for future needs by predicting potential performance problems from gradual deterioration before real users are affected

NUTANIX READY VALIDATION

- Login Enterprise is validated on Nutanix AHV



RESOURCES AND GETTING STARTED

- Citrix on Nutanix AHV Reference Architecture, Validated by Login VSI
<https://www.nutanix.com/go/login-vsi-citrix-xendesktop-and-xenapp-running-on-nutanix-ahv.php>
- Citrix Reference Architecture Webinar:
<https://youtu.be/W7vS8RREy0I>
- Presence Health Case Study
<https://www.loginvsi.com/login-vsi-blog/98-login-vsi/860-presence-health-optimizes-user-density-on-nutanix-for-major-epic-upgrade-with-login-vsi>
- Nutanix Alliance Partner Page
<https://www.nutanix.com/partners/technology-alliances/login-vsi>

ABOUT LOGIN VSI

Login VSI is the only solution in the market guaranteed to maximize the end-user experience for digital workspaces. We do this by using synthetic users to automatically test and validate the impact of change in physical, virtual and cloud-based workspaces - safeguarding application and desktop performance. Login VSI has over 400 customers in 50 countries. For more information, visit www.loginvsi.com.

ABOUT NUTANIX

Nutanix makes infrastructure invisible, elevating IT to focus on the applications and services that power their business. The Nutanix enterprise cloud platform delivers the agility, pay-as-you-grow economics and operational simplicity of the public cloud, without sacrificing the predictability, security and control of on premises infrastructure. Nutanix solutions leverage web-scale engineering and consumer-grade design to natively converge compute, virtualization and storage into a resilient, software-defined solution that delivers any application at any scale.



T. 855.NUTANIX (855.688.2649) | F. 408.916.4039
info@nutanix.com | www.nutanix.com | [@nutanix](https://twitter.com/nutanix)