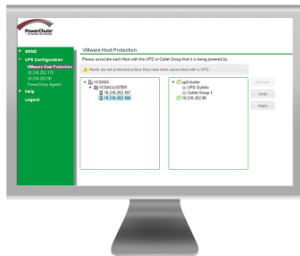


Life Is On



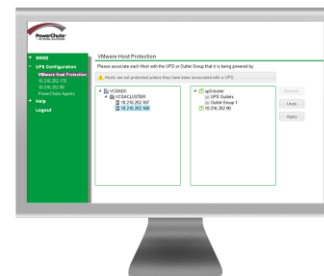
PowerChute™ Network Shutdown

Provides graceful network-based shutdown of physical and virtual IT architectures

www.apc.com/products/family/index.cfm?id=127

PowerChute™ Network Shutdown

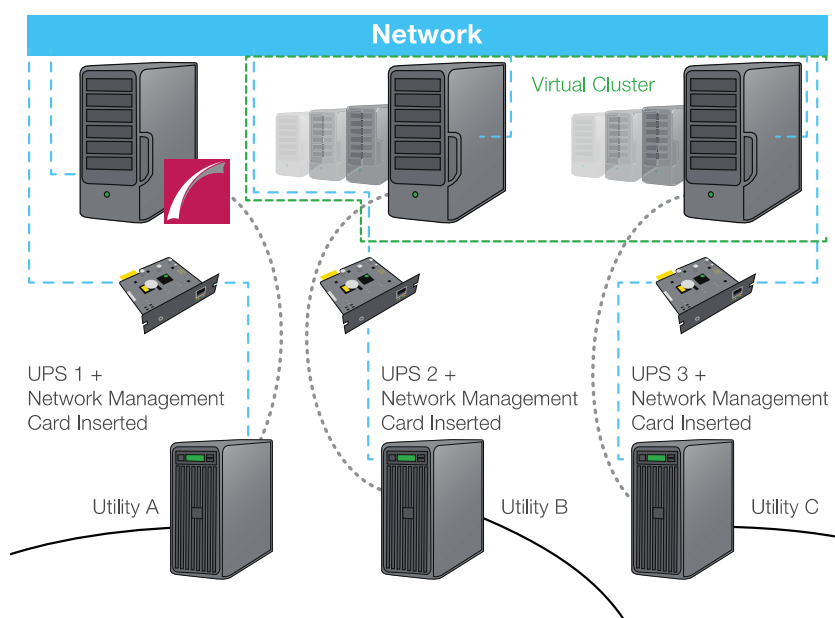
Virtualization Support



Protect your physical and virtual IT environment against power outages and other environmental and physical threats.

While virtualization has changed the IT landscape, the need for power protection remains.

PowerChute™ Network Shutdown communicates over the network with your APC™ by Schneider Electric™ UPS to gracefully shut down your physical servers and virtual machines. This protection minimizes data corruption and reduces downtime when critical events such as extended power outages occur.



Features:

- Graceful network-based shutdown
- Sequenced server shutdown
- Integration with VMware® and Hyper-V
- Support for virtual clusters
- Virtual machine migration/shutdown
- Virtual machine prioritization
- Intuitive PowerChute setup wizard
- Browser accessible
- Command file integration
- Redundant and parallel UPS support
- Event logging
- HTTPS communications
- IPv6 support
- SNMP v1 and v3 support

PowerChute™ Network Shutdown

Virtualization Support

Virtualization platform integration

Supports VMware® and Microsoft® virtual clusters with multiple configuration options.

When availability is threatened;

- Migrate virtual machines to healthy hosts within a single site or across multiple geographical locations
- Select which host to migrate virtual machines to
- Control the order of virtual machine migration, shut down, and power on
- Gracefully shut down virtual machines
- Gracefully shut down VMware vApps
- Gracefully shut down hosts

Ease of management

PowerChute displays unique and intuitive graphical representations of your virtual cluster infrastructure to simplify configuration.

- Manage your hosts and UPSs from a single screen with simple drag-and-drop functionality
- Move virtual machines into high, medium, and low priority groups for greater control

VMware Virtual Appliance and Plug-in

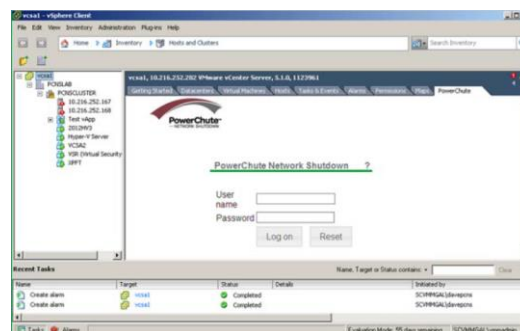
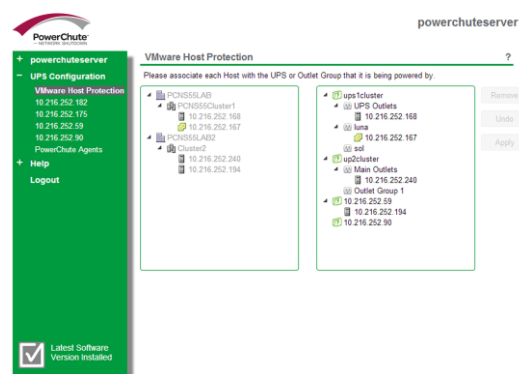
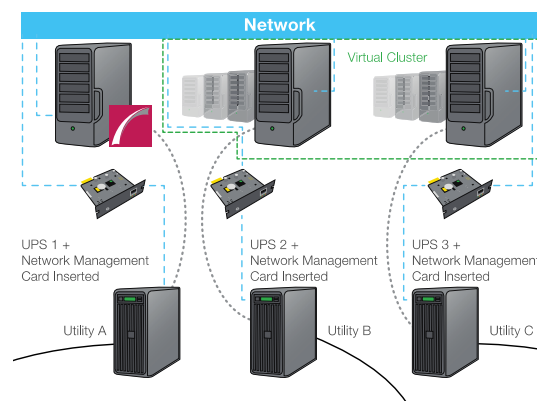
Options to deploy PowerChute Network Shutdown as a VMware Virtual Appliance and to easily integrate with vSphere using a PowerChute Plug-in.

- Install using the Virtual Appliance to simplify the installation and deployment experience
- Display the PowerChute user interface using either the vSphere Desktop Client or Web Client Plug-in

For PowerChute Network Shutdown operating system support:

View the compatibility chart on the APC website at: www.apc.com/wp/?um=200

To learn more and download PowerChute Network Shutdown, go to: www.apc.com/products/family/index.cfm?id=127



PowerChute™

Network Shutdown

Virtualization Support

Features and benefits	
Protection	
Operating system shutdown	Performs graceful, unattended operating system shutdown for critical events such as extended power outages.
Sequenced server shutdown	Sequences the shutdown of multiple servers powered by the same UPS to extend runtime for higher priority servers.
Run command file	Run command file on network shutdown sequence as well as start-up sequence.
Virtualization support	
Virtual cluster support	Supports virtual machine migration, virtual machine shutdown, and host shutdown in Virtual Clusters.
Virtual cluster view	Displays a graphical representation of your Virtual Cluster environment and UPS setup on a single screen to provide an intuitive view of your UPS and host configuration.
Virtual machine migration options	Triggers virtual machine migration to available hosts in the same cluster on a single site or across different geographical locations. Includes the option to control where specific virtual machines get migrated to.
Virtual machine prioritization	Control the order in which virtual machines are migrated, shut down, and powered on by moving virtual machines into high-, medium-, and low-priority groups.
VMware vApp shutdown	Enables shutdown and startup of VMware vApps to control the sequence of virtual machine shutdown/startup.
VMware Virtual Appliance	Provides the option to deploy PowerChute as a virtual appliance for ease of installation.
VMware vSphere plug-in options	A vSphere plug-in option integrates PowerChute with vCenter Server for ease of management enabling PowerChute monitoring with the vSphere Client. Plug-in options are available for either the vSphere Web Client or vSphere Desktop Client.
Microsoft SCVMM integration	Provides the option to integrate with Microsoft System Center Virtual Machine Manager (SCVMM) and leverage maintenance mode to migrate or save virtual machines when a critical UPS event occurs.
Availability	
Event logging	Pinpoint the timing and sequencing of events leading up to an incident with the event log.
Manageability	
Text-based INI configuration file	Allows for flexibility in archiving configuration settings or copying configured settings from one PowerChute agent to another.
IPv6 support	Capable of operating on a network using IPv6 protocol.
Network Management System Integration	Discover and manage PowerChute machines by using SNMP v1 or v3 to query and configure PowerChute settings. Send SNMP Traps for critical UPS events ensuring timely notifications.
StruxureWare Data Center Expert Compatibility	Discover and monitor PowerChute Agents via SNMP v1 or v3. Integrate SNMP Traps for timely notifications of UPS critical events.
UPS configuration support	
Redundant-UPS configuration support	Supports up to four UPSs in a redundant-UPS configuration. All UPSs in a redundant configuration must belong to the same UPS family.
Advanced redundant UPS setups	Monitors multiple groups of redundant UPSs, each with configurable redundancy levels such as N+1 or N+2. Shutdown actions depend on the number of UPSs and the level of redundancy in each UPS setup.
Parallel-UPS configuration support	Recognizes a parallel-UPS configuration as a single UPS system in the case of actionable events (for UPS devices that are parallel-capable).

Schneider Electric
132 Fairgrounds Road,
West Kingston, RI, 02892
Phone: + 001 401 789 5735
www.schneider-electric.com

Life Is On

APC
by Schneider Electric